

HVER OG ÉN / EACH AND EVERY ONE

Tina Maria Nielsen

21/3– 19/4 2014

Charlotte Fogh Gallery har den store glæde at præsentere udstillingen "Hver og én" af billedhuggeren Tina Maria Nielsen. Udstillingen er kunstnerens første separatudstilling i galleriet og viser nye skulpturer i bronze og voks samt en række frottageværker.

Tina Maria Niensens værker tager afsæt i de hverdagsobjekter, vi omgiver os med. Skulpturerne laves af ting fra hendes atelier eller lige udenfor, og den store verden bliver synlig gennem stikdåser, stakke af bøger, en flosset træstolpe, et beskåret æbletræ, eller resterne af en frugtkasse som hun støber i 1:1 i bronze eller voks. I udstillingen "Hver og én" koncentrerer værkerne sig om det særegne overfor det almene. Det enkelte som det forholder sig til helheden.

Central for udstillingen er skulpturen "Line of Descent", der i 2013 var udstillet på Brandts Kunsthall. Værket er en 3 meter lang bronzeafstøbning af et æbletræ, der organisk løfter sig fra gulvet, fra stamme til de friske knopper på de yderste kviste. Værket danner afsæt for skulpturserien "Vildskud", der består af afskårne trægrene med et lodret voksende skud: Vildskuddene der symboliserer det irrationelle – en overskydende og ufrugtbar energi. Værkets hårde materiale står i kontrast til de organiske vildskud, der på grund af værkets struktur bliver meget levende. Træets organiske struktur sættes videre i spil i et andet hovedværk "Atlas", der er en frottage af kunstnerens skrivebord. Træets langsomme årringe i bordets hærgede finerede overflade fremmanes gennem grafittens aftryk på papiret - en kortlægning af kunstnerens konkrete arbejdsproces ved bordet og ligesom bronzeafstøbningerne, en indirekte oversættelse af virkeligheden under berøring. I forlængelse af disse markante værker, har kunstneren til udstillingen desuden skabt nye værker af æbler støbt i voks og serien "Where we meet", der består af tynde lag voks på papir samt skulpturen "Basic parts". En frugtkasse hvis splittede enkeltdele er støbt i bronze og nu står som et anagram, hvor nye betydninger kan opstå.

Tina Maria Nielsen er uddannet fra det Kongelige Danske Kunstakademi i 1999. Hun har siden slutningen af 1990'erne udstillet regelmæssigt i Danmark og internationalt på både gallerier og kunsthaller. Hun er tildelt flere arbejdslegater fra Statens Kunstfond og blev i 2007 tildelt det tre-årige arbejdslegat. Tina Maria Nielsen har senest haft en stor separatudstilling "Skin of Mine" på Brandts Kunsthall i 2013 samt udstillingen "I am You are" på Gallery Thomas Wallner, Simris, Sverige, "Beginnings and Ends", Kunstverein Buchholz Nordheide og "Looking for somewhere", Effearte Gallery i Milano, Italien

Charlotte Fogh Gallery has the pleasure to present the exhibition "Each and every one" of the sculptor Tina Maria Nielsen. The exhibition is the artist's first solo exhibition in the gallery showing new sculptures in bronze, wax and frottage pieces.

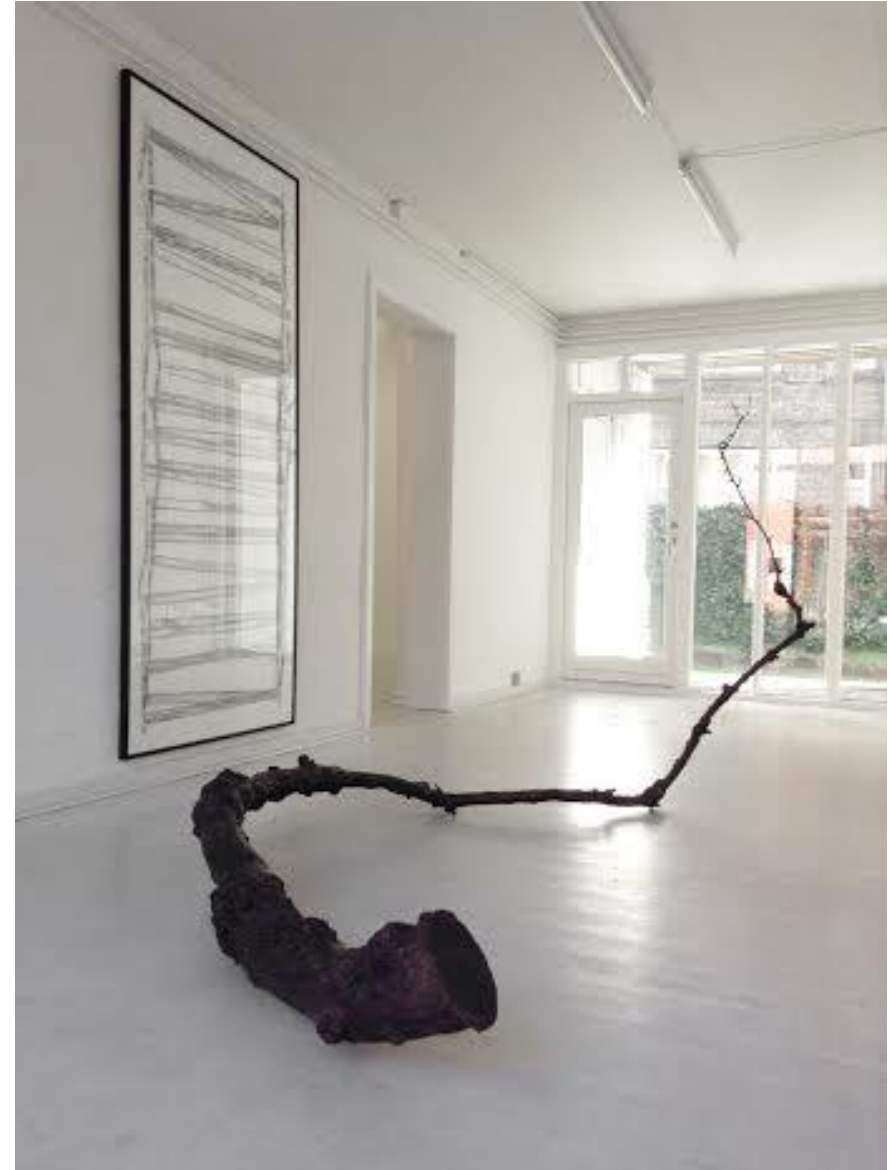
Tina Maria Nielsen's works are based on the everyday objects that surround us. The sculptures are made of things from her studio or just outside, and the world at large becomes visible through sockets, stacks of books, a frayed wooden stud, a cut apple tree, or the remnants of a fruit crate she creates in 1:1 in bronze or wax. In the exhibition "Each and every one" focuses change from the specificity towards the general.

Central to the exhibition is the sculpture "Line of Descent", which in 2013 was exhibited at Kunsthallen Brandts. The work is a three meter bronze cast of an apple tree that rises organically from the floor, from trunk to the fresh buds on the outer twigs. The work forms the basis for the sculpture series "Vildskud" (Tree sucker), consisting of cut tree limbs with a vertical growing branch: Tree suckers are symbolizing the irrational – an excess and infertile energy. The tree's organic structure continues in another major work "Atlas" which is a frottage of the artist's desk. The tree's slow growth rings in the torn veneered surface of the table are conjured through the graphite prints on paper – a survey of the artist's specific workflow at the table and, like bronze cast, an indirect translation of reality in touch. Following these striking works, the artist has also created new works of apples cast in wax and the paperwork series "Where we meet" consisting of thin layers of paper dipped in wax and the sculpture "Basic Parts": A fruit box of fractured parts are cast in bronze and now stands as an anagram, where new meanings can arise.

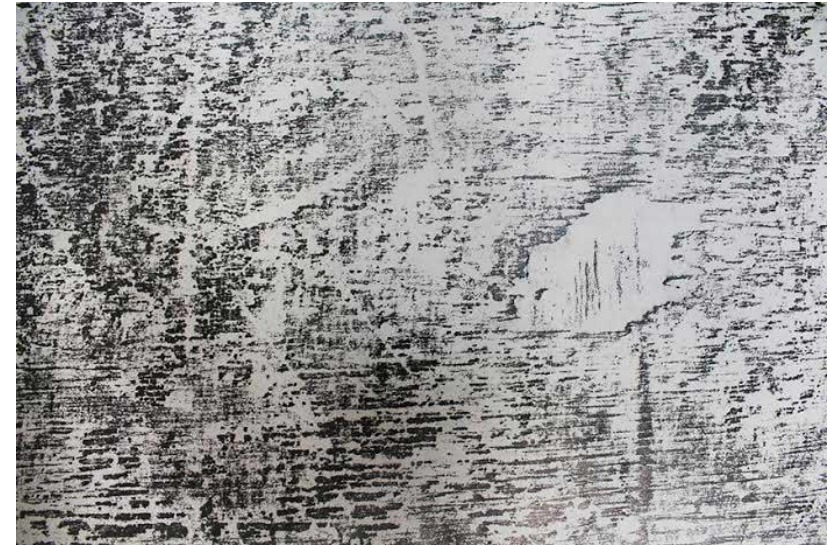
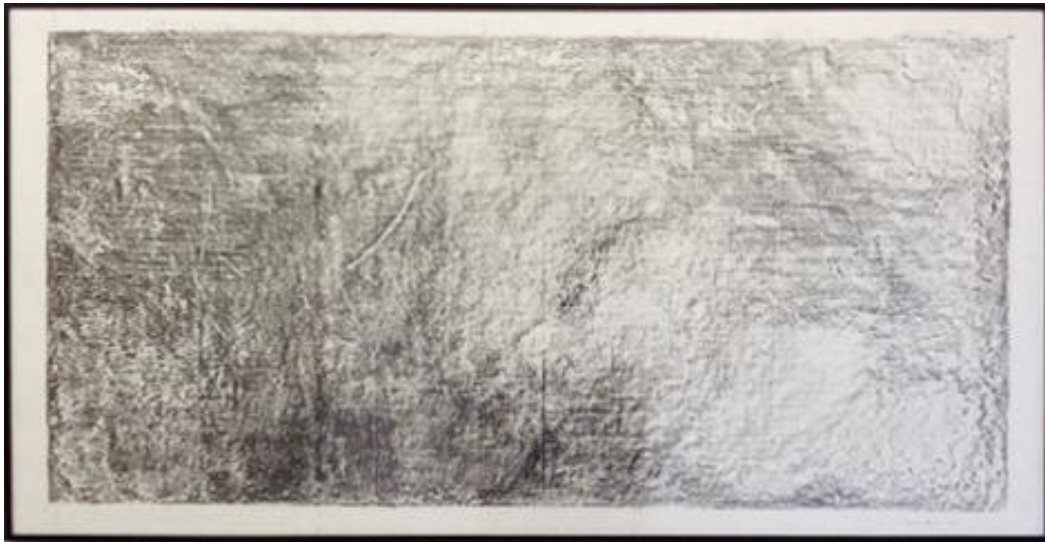
Tina Maria Nielsen graduated from the Royal Danish Academy of Fine Arts in 1999. Since the late 1990s she has exhibited regularly in Denmark and internationally in both galleries and art centres. She has been awarded several grants from the Danish Arts Foundation and in 2007 was awarded the three – year grant. Tina Maria Nielsen has recently had a major solo exhibition "Skin of Mine" at Brandt's Kunsthall in 2013 and the exhibition "I am You are" at Gallery Thomas Wallner, Simris, Sweden, "Beginnings and Ends", Kunstverein Buchholz Nordheide and "Looking for somewhere" Effearte Gallery in Milan, Italy.



Line of Descent 2013
150 x 120 x 325 cm
Bronze
189.000 DKK / 25.370 EUR

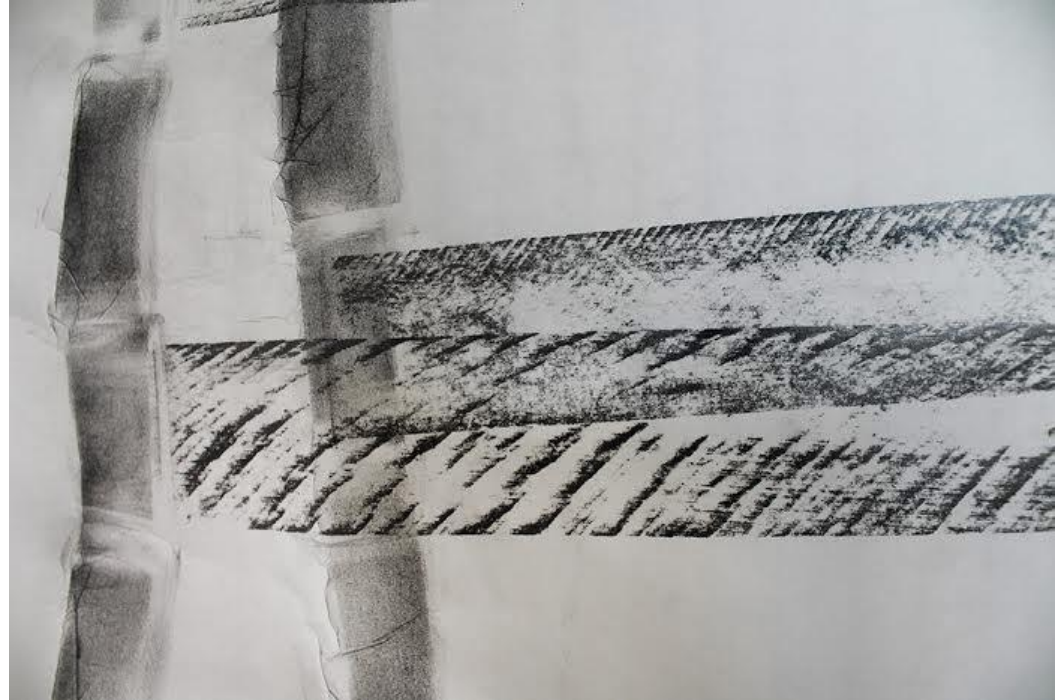
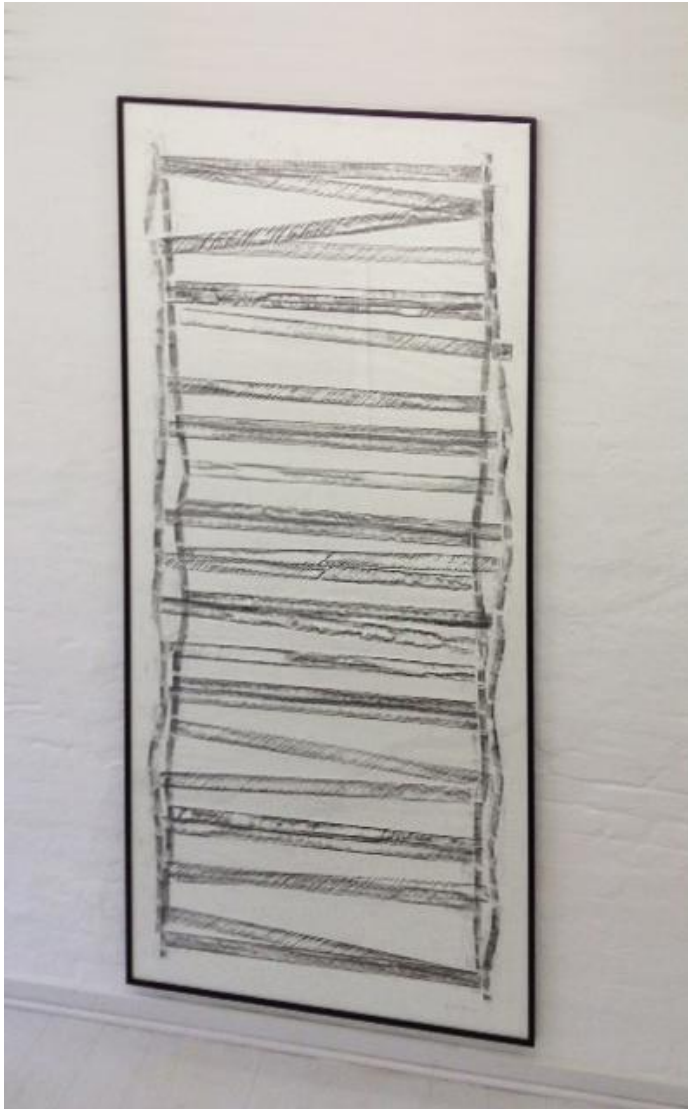


Line of Descent



Atlas 2014
100 x 193 cm framed
Japanese paper, graphite
39.000 DKK / 5.235 EUR

Detail from Atlas



Naked 2014
210 x 100 cm
Japanese paper, graphite
41.000 DKK / 5.503 EUR

Detail from Naked



View: Where we meet 2014
14 pieces



Where we meet 2014
30 x 40 cm
220 G paper, wax, framed
Each 3.000 DKK / 400 EUR



Basic Parts 2014
38 x 12 x 170 cm
Bronze
44.000 DKK / 5.906 EUR



Untitled 2009
10 x 10 x 253 cm
Bronze
97.000 DKK / 13.021 EUR



Each and Every one 2014
20 x 130 x 30 cm
Cotton, wax
22.000 DKK / 2.953 EUR

Exhibition view



Unbidden Fruits 2014

1:1 size

Wax

Each 800 DKK / 107 EUR – All 37 pieces 22.000 DKK / 2953 EUR

Unbidden Fruits



Vildskud V 2014
75 x 15 x 30 cm
Bronze
12.000 DKK / 1.610 EUR



Vildskud IV 2014
85 x 15 x 30 cm
Bronze
14.000 DKK / 1880 EUR



Vildskud III 2014
95 x 15 x 30 cm
Bronze
15.000 DKK / 2.013 EUR



I am, You are 2014
175 x 45 x 60 cm
Bronze
95.000 DKK / 12.752 EUR



New Years Eve II 2014
75 x 15 x 25 cm
Bronze
Each 1.600 DKK / 215 EUR



I on, II 2014
97 x 20 x 111 cm
Wax
22.000 DKK / 2.953 EUR

CV Tina Marie Nielsen

Born 1964 in Odense. Lives in Copenhagen

Education

- 1991-1999 The Royal Danish Academy of Fine Arts', Schools of Visual, Cph
The Royal Danish Academy of Fine Arts' Schools of Visual, cand. phil.
- 1984-1986 The Royal Danish Academy of Fine Arts', Schools of Architecture, Cph

Selected solo exhibitions

- 2014 Each and Every one, Gallery Charlotte Fogh, Aarhus
2014 I am You are. Galleri Thomas Wallner, Sweden
2013 Skin of mine, Kunsthallen Brandts, Odense (catalog)
2013 Looking for somewhere, Galeria Effearte, Milano
2012 Diplopia, Clausens Kunsthandel, Cph, with Michael Mørk
2009 Back to the Lot, kulpturi, Cph
2006 Work/space, Kunsthall Charlottenborg, Cph, with PRO
2005 Herfra hvor jeg står, Gallery Nordlys, Cph
2005 A Room of ones own, Showroom, FFKD, Cph (catalog)
2004 A Room of ones own, Ringsted Gallery
2004 A Room of ones own, Kunsthall Charlottenborg, Cph, with Den Gyldne
2000 Layer 2, Vester Voldgade Cph (catalog), with Rikke Ravn Sørensen
1998 Cover Up, Overgaden, Institute of Contemporary Art, Cph
1991 Eternity, Gallery Kongo, Cph

Selected group exhibitions

- 2014 Skulpturimuseumsbygningen, Museumsbygningen, Cph
2014 Polyfoni II. Galleri Thomas Wallner, Sweden
2014 Paper:cuts,-embroideries and frottage.-Galleria-Effearte,-Milan
2014 Omhandling.-Galleri Poulsen. Copenhagen
- 2013 Zeigen - an audio tour through Copenhagen, Nikolaj Kunsthall, Copenhagen
2013 Pluralistisk Panorama, Vestjyllands Kunstpavillion, Videbæk
2013 Entropi, AW-project, Den FRIE - centre of contemporary art, Cph
2013 Polyfoni. Galleri Thomas Wallner, Sweden
2013 Vejene omkring, Rungstedlund, The Karen Blixen Museum, Rungsted
- 2012 Landing, projectspace TEKSAS, Græsted
2012 Rundtenom/Roundabout, Den FRIE - centre of contemporary art, Cph

- 2011 Vielfalt, Gallery Lars Olsen, Cph
2011 Looking backwards to see straight – Ringsted gallery's 30 year anniversary
2011 B&K Projects gallery, with AneMette Ruge og Sonja Lillebæk Christensen,
- 2009 FFKD at Illums Bolighus
2009 Augustiana Sculpture Park, Augustenborg
2009 Long Way Home, Gallery Cluster, Berlin
2008 Artist Association Jylland. Center For Contemporary Art, Aarhus
2008 Før hele denne historie, Skulpturi.dk Copenhagen
2008 Sculpture in Eventyrhaven. Tri-annual event in the public domain, Odense.
2008 Parallel Parking – exhibition in the public domain, Cph.
2008 Inside Modernism. Landskrona Konsthall. Sverige
2008 Udkast. Skulpturi, Cph
2008 Den nye almindelighed. De gamles by, Cph
- 2007 Snowflake, Vejen Artmuseum
2007 Grand opening Skulpturi
2007 Skulpturi. at Alt_Cph, alternative art fair, FFKD, Cph
2007 Denmark most lovely? Arne Jakobsen Lounge, Fields
2007 Pengenes kunst, Køs, museum of art in public spaces, Køge
2007 Pastiche, Sølyst, Jyderup
2007 Til vægs, Portalen, Greve
2007 Painting, Gallery Birthe Lauersen, Cph
2007 Relief, Gallery Pi, Cph
- 2006 Stativstakitasket. Århus Kunstbygning. Århus (catalog)
2006 Påskeudstillingen, Janusbygningen, Tirstrup
2006 Time, Nikolaj, Cph Contemporary Art Center, Cph (catalog)
2006 Time, Brænderigården, Viborg
2006 Maleri uden grænser, Esbjerg Art Museum
- 2005 Layer 5, Transformation af funktion, Islands Brygge (catalog)
2005 Højde Bredde Dybde, Gallery Susanne Ottesen, Cph
2005 Grænselandsudstillingen. Åbenrå (catalog)
- 2003 Layer 4 - Eksterieur, Outdoor exhibition in the public park Søndermarken (catalog)
- 2003 deboxing, Stockholm Art Fair
- 2002 Layer 3 - Interieur, Hauser Plads 30a, Cph (catalog)
2002 Kunsstofkunst, The Technical Museum of Denmark, Helsingør
- 2001 Once we were close Krognoshus, Lund, Sweden
2000 Inhale-Exhale, Landskrona, Sweden
- 1998 Foto/Realiteter, Biennale Syd, Kristianssand (catalog)
1998 When plastic becomes art, The Technical Museum of Denmark, Helsingør
- 1997 The Autumm Exhibition. Charlottenborg Exhibition Hall, Cph (catalog)
1997 Exit 97, GI Strand, Exhibition Hall, Cph (catalog)

2006	Stativstakitkasket. Århus Kunstbygning. Århus (catalog)
2006	Påskeudstillingen, Janusbygningen, Tirstrup
2006	Time, Nikolaj, Cph Contemporary Art Center, Cph (catalog)
2006	Time, Brænderigården, Viborg
2006	Maleri uden grænser, Esbjerg Art Museum
2005	Layer 5, Transformation af funktion, Islands Brygge (catalog)
2005	Højde Bredde Dybde, Gallery Susanne Ottesen, Cph
2005	Grænselandsudstillingen. Åbenrå (catalog)
2003	Layer 4 - Eksterieur, Outdoor exhibition in the public park Søndermarken (catalog)
2003	deboxing, Stockholm Art Fair
2002	Layer 3 - Interieur, Hauser Plads 30a, Cph (catalog)
2002	Kunststofkunst, The Technical Museum of Denmark, Helsingør
2001	Once we were close Krognoshus, Lund, Sweden
2000	Inhale-Exhale, Landskrona, Sweden
1998	Foto/Realiteter, Biennale Syd, Kristianssand (catalog)
1998	When plastic becomes art, The Technical Museum of Denmark, Helsingør
1997	The Autumn Exhibition. Charlottenborg Exhibition Hall, Cph (catalog)
1997	Exit 97, GI Strand, Exhibition Hall, Cph (catalog)

Books/texts

2013	Skin of Mine, catalog. text by Maria Kjaer Thomsen, Lise Skytte Jakobsen.
2013	Revolver Publishing 96 pages
2009	Tina Maria Nielsen, catalog. texts by mag. art Mai Misfeldt and art debater
2009	Barbara Læssøe Stephensen. Hurricane Publishing 112 pages
2008	Eventyrhaven, Odense Mag. Art Magnus Thorø Clausen, Catalog
2007	Nybrud, Danish Art in the 1990. Rune Gade, Camilla Jalving
2006	Stativ Stakit Kasket. catalog. Mai Misfeldt
2002	Break a Leg. Dansk Kunst 2002 by cand. mag, art critic Mai Misfeldt
2001	Antydningens kunst. www.kopenhagen.dk by cand. mag, art critic Julie Damgaard Nielsen
2000	Figur and Seduction. Spring, nr.14 af cand. mag. and art critic Mai Misfeldt
1996	Proms III af musumsinspector Andreas Jürgensen

Public commissions

2012	The reading group, nine benches with bronze sculptures for Sundholm, Munci
2012	Reality Check, three public sculptures for INANO, Aarhus University
2006	Mural decoration of 17 houses in Vejleåparken, Ishøj by AAB
2005	The little mermaid 10-krone, coin for The National Bank
2005	Silver withal of Governor by Royal Appointment Bodil Nyboe Andersen
2003	The goose tower 20-krone coin in the tower series for The National Bank
2003	Bronze portrait of politician, former minister of Svend Auken, Folketinget

Curatorial work

2007 - 12	Initiates Skulpturi: an independant exhibition space for sculpture and installation. www.skulpturi.dk
2007 - 12	Curates and arranges Layer 1 – 5, in 1996, 2000, 2002, 2003, 2005. www.layer-skulptur.dk

Trustees

2014	Member of The danish Academy
2014 - 17	Board member of KUNSTEN Museum of Modern Art, Aalborg
2009 - 13	Member of the art council of the Municipality of Copenhagen
2011	Member of the evaluation committee of Gødstrup Regions Hospital

Honors/awards

2014	Anne Marie Telmanyi Født Carl-Nielsens legat
2013	Billedhuggeren Gerhard Hennings Legat
2012	Billedhugger Viggo Jarls legat til fordel for danske billedhuggere
2009	Ole Haslunds Artistgrant, Henry Heerups grant
2007	Danish Arts Foundation, 3 year work grant
2006	Exhibition awarded honoraria by the Danish Arts Foundation, PRO
2006	Danish Arts Foundation, work grant
2006	Exhibition awarded honoraria by the Danish Arts Foundation, StativStakitKasket
2005	Danish Arts Foundation, work grant
2004	Exhibition awarded honoraria by the Danish Arts Foundation, Den Gyldne
2004	Hans of Ida Blix' Fondation
2003	Danish Arts Foundation, work grant
2002	The Academy Council travelgrant
2001	Danish Arts Foundation, 2 year working grant
1999	Oda og Hans Svenningsens Fondation
1998	Exhibition awarded honoraria by the Danish Arts Foundation, Cover, Overgaden
1998	Sleipnir Nordic Institut of contemporary art,
1998	The Academy Council
1997	Fondation Idella,
1997	Gerhard Hennings Grant
1996	Professor Eickhoff's Sculptors grant
1995	L. F. Foghts fond, Glashandler Ronges Fondation
1995	Kunsthändler Rikard Wilstrup og hustru Franciska f. Jensen's grant
1994	Frk. Marie Månssons travelgrant
1994	Professor Eickhoff's Sculptorgrant

Charlotte Fogh Gallery

Mejlgade 18B
8000 Aarhus C
Denmark

www.charlottefogh.dk

cf@charlottefogh.dk

+45 2929 7105

Opening hours

Tuesday – Friday 12 – 17

Saturday 11 – 15

And by appointment

CHARLOTTE FOGH
GALLERY